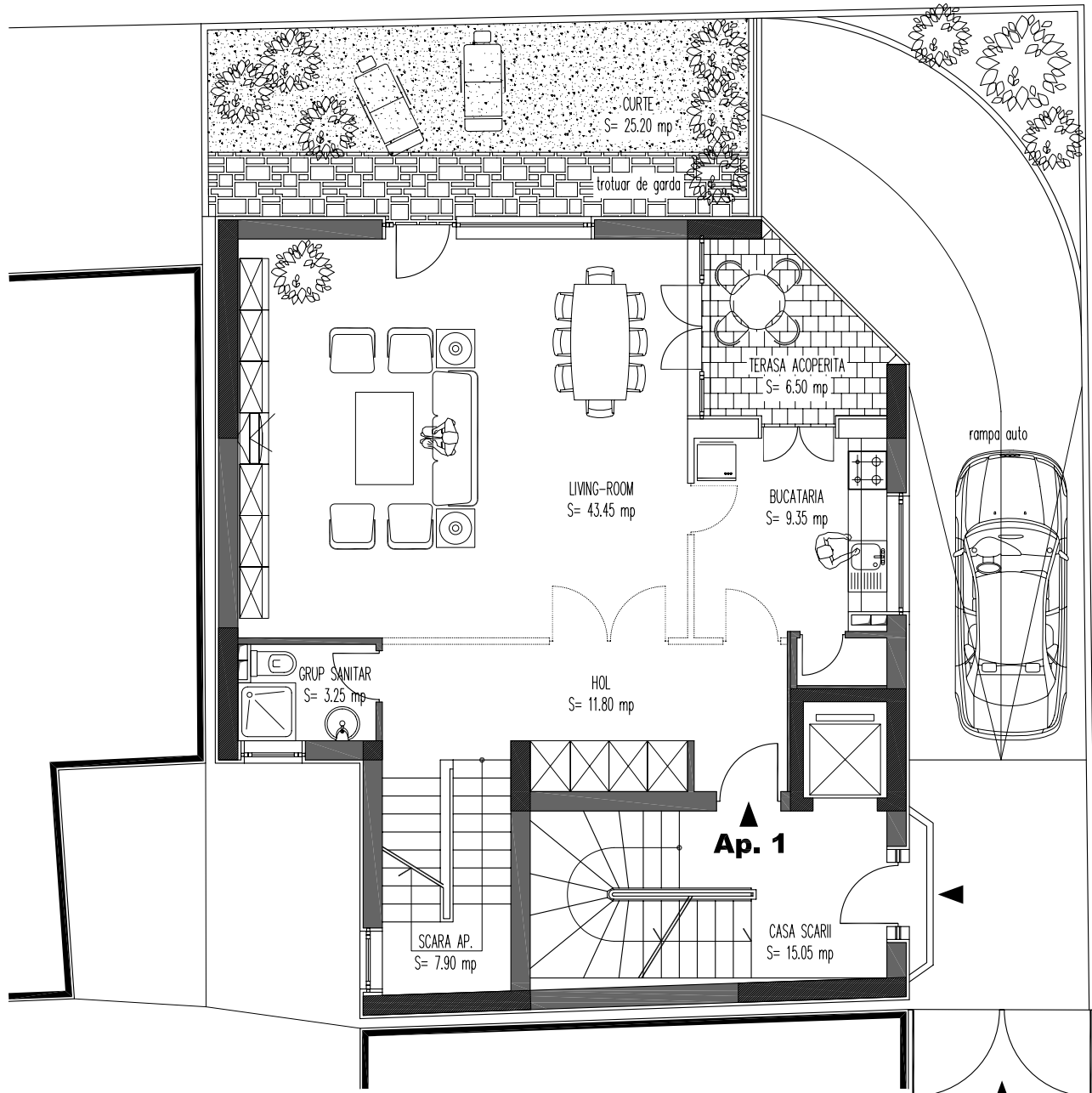


# PLAN SUBSOL



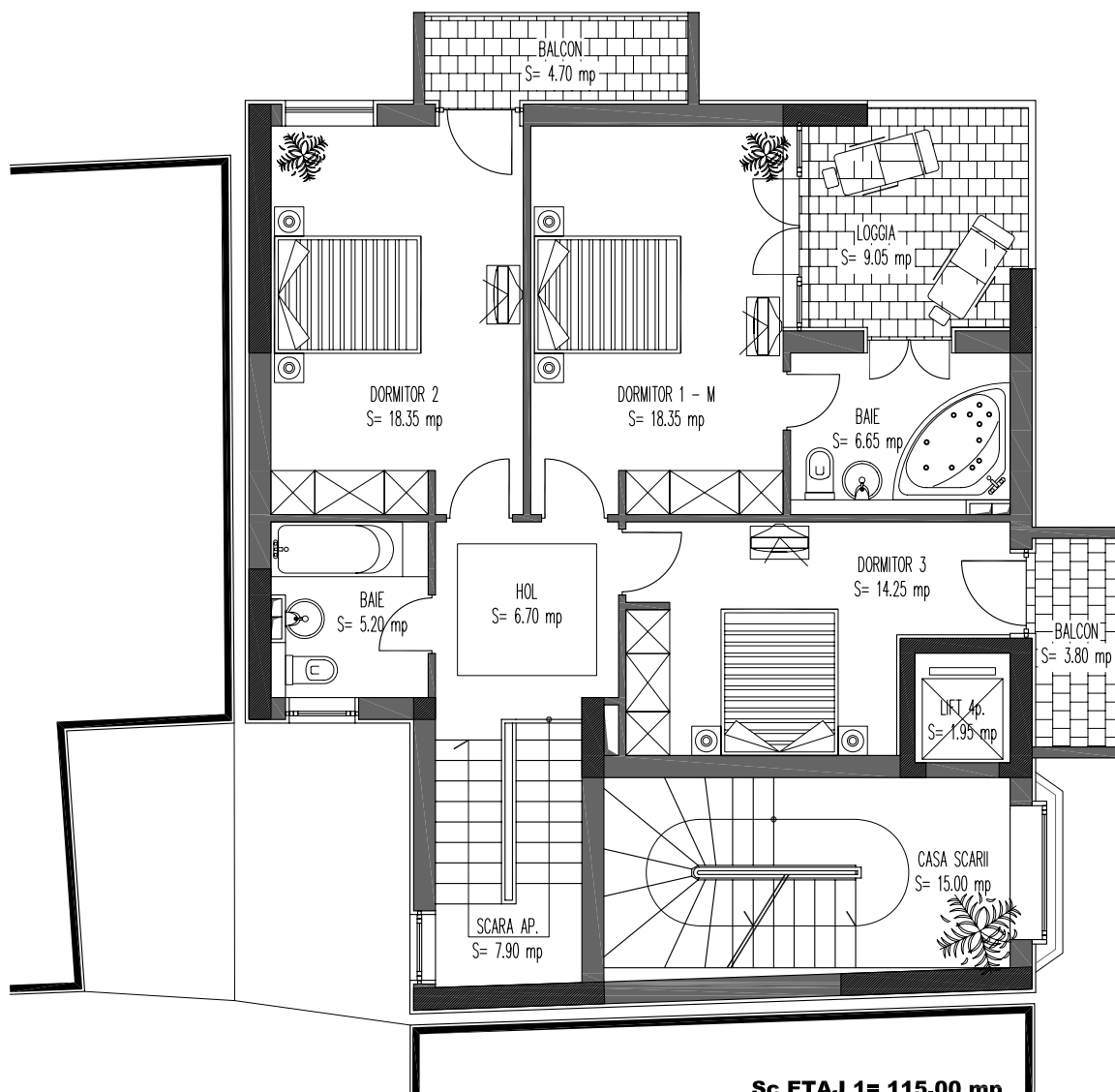
**Sc PARTER= 114.30 mp**

**S terasa= 9.05 mp**

**S curte= 50.65 mp**

**S TOTALA (PARTER)= 174.00 mp**

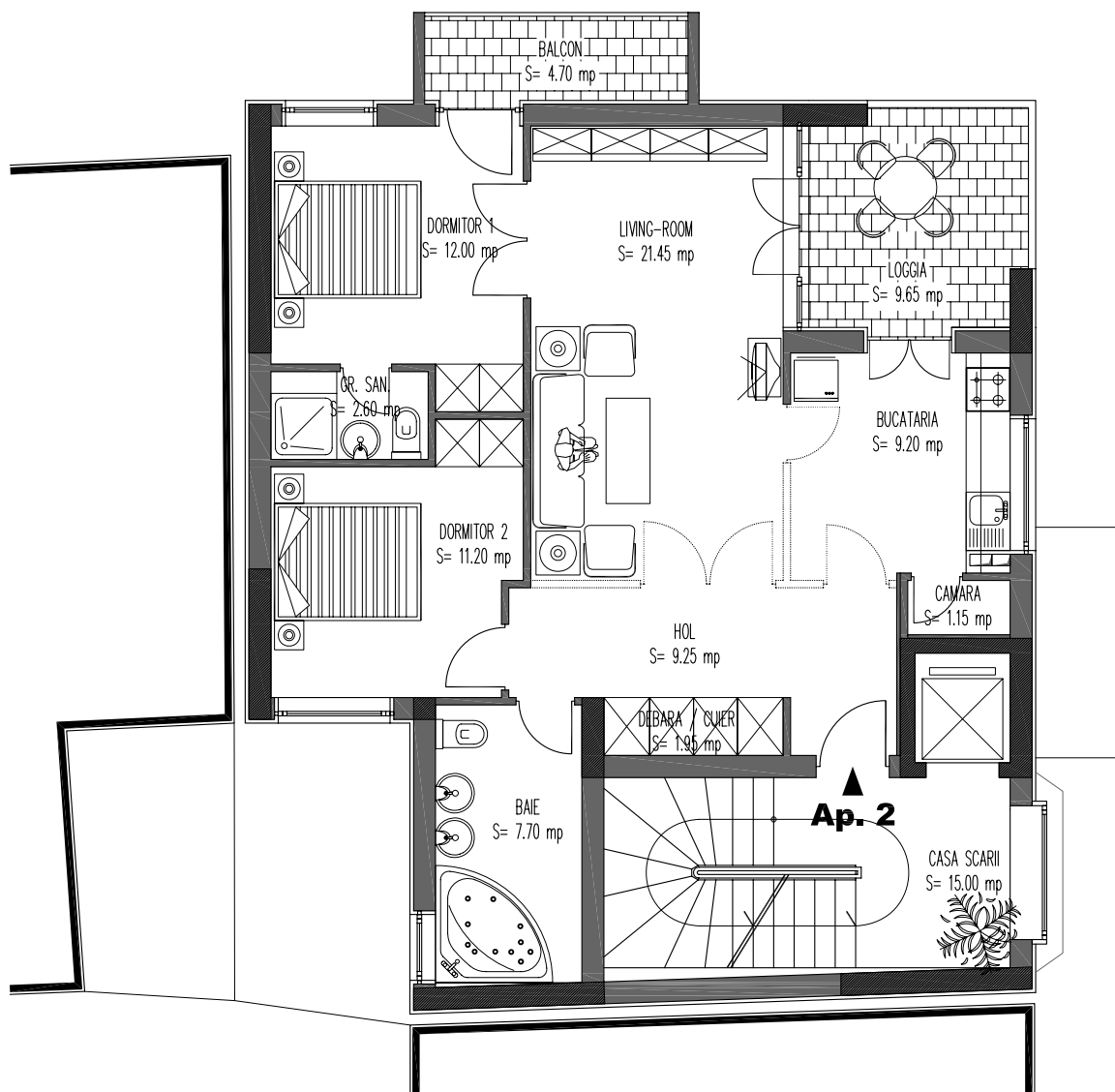
# PLAN PARTER



**Sc ETAJ 1= 115.00 mp**  
**Sc loggia= 9.65 mp**  
**Sc balcoane= 8.50 mp**

**S TOTALA (ETAJ 1)= 133.15 mp**

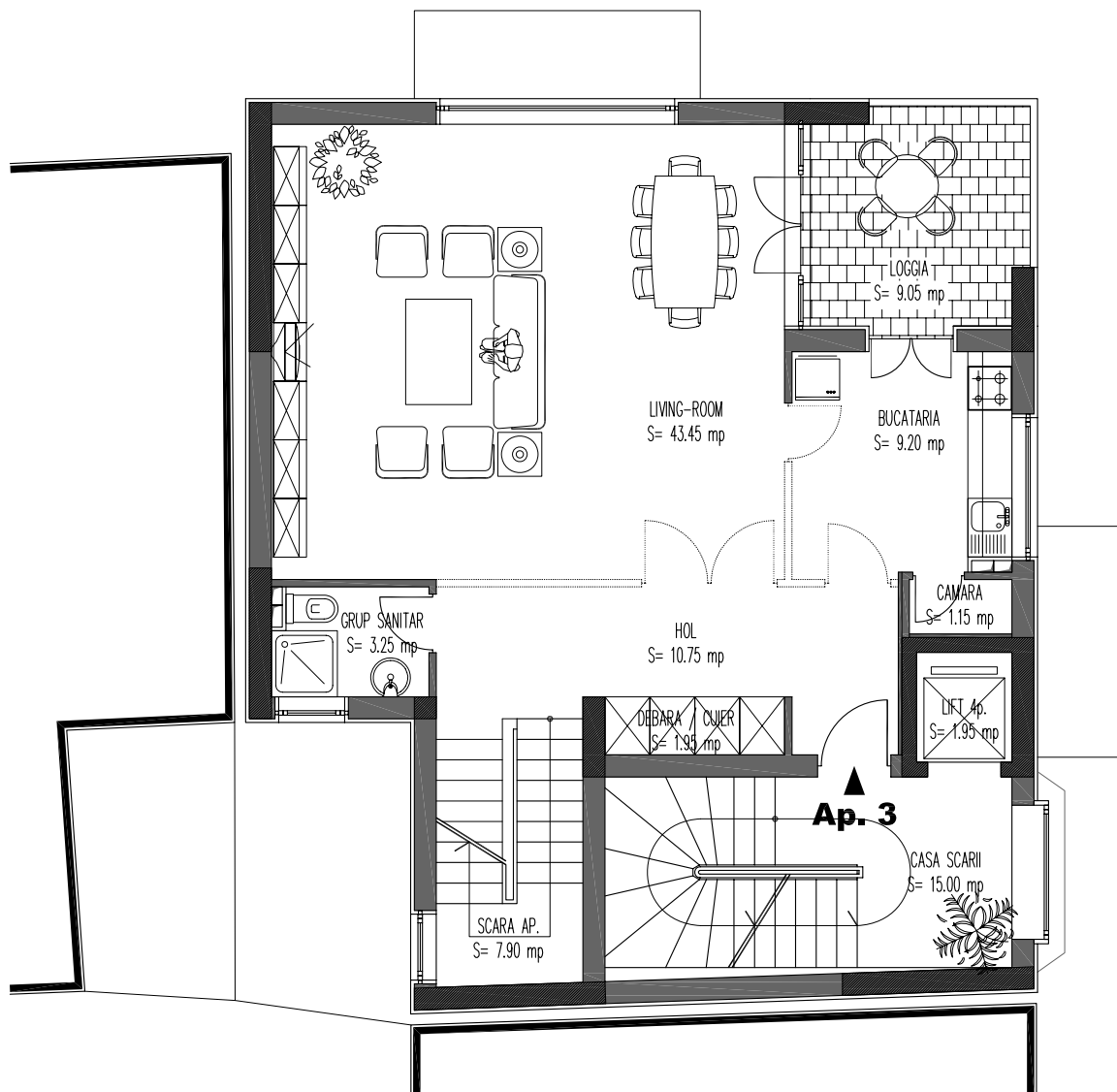
# PLAN ETAJ 1



Sc ETAJ 2= 115.00 mp  
 Sc loggia= 9.65 mp  
 Sc balcoane= 4.70 mp

**S TOTALA (ETAJ 2)= 129.35 mp**

## PLAN ETAJ 2



**Sc ETAJ 3= 115.60 mp**  
**Sc loggia= 9.65 mp**

**S TOTALA= 124.65 mp**

# PLAN ETAJ 3



**Sc ETAJ 4= 115.00 mp**

**Sc loggia= 9.65 mp**

**Sc balcoane= 8.50 mp**

**S TOTALA= 132.80 mp**

**PLAN ETAJ 4**